

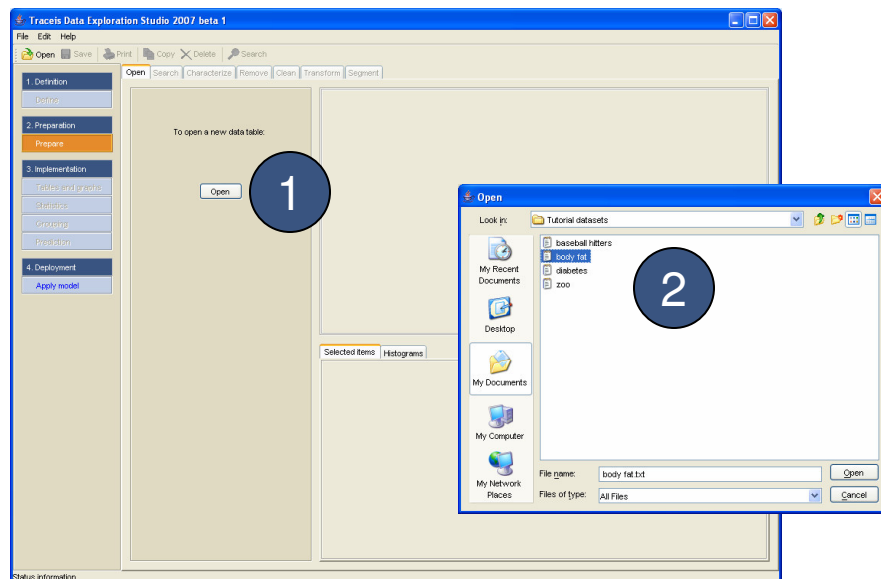
Traceis™ Data Exploration Studio Opening tables

1 Open

The software will load a table of observations from a text file. This file should contain data separated into columns using a delimiter such as a tab or a comma. To open a file, click on the open button.

2 Select a file

Use the file browser to locate the file to open. Select the file and click open.



MAKING SENSE OF DATA

1 Table preview

A preview of the table is shown in the center of the window.

2 Specify table header

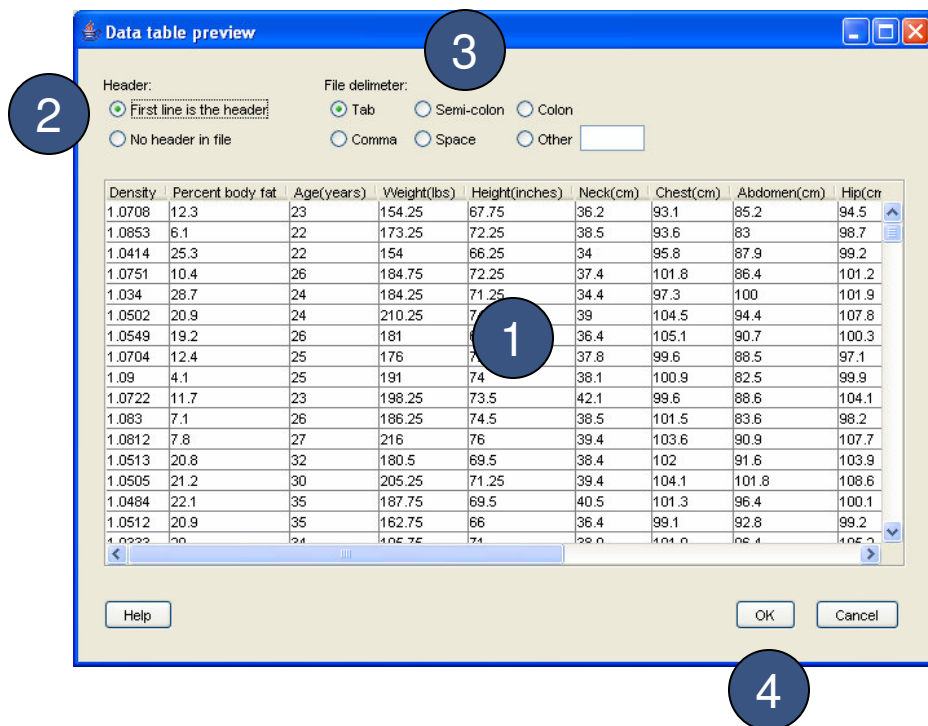
Use these options to change whether the first line in the table is a header. Where no header is provided in the file, column names will be automatically generated

3 Table delimiter

Use these options to change the delimiter used to separate the columns in the file.

4 Load table

Once the table settings have been made, click OK to load the data.



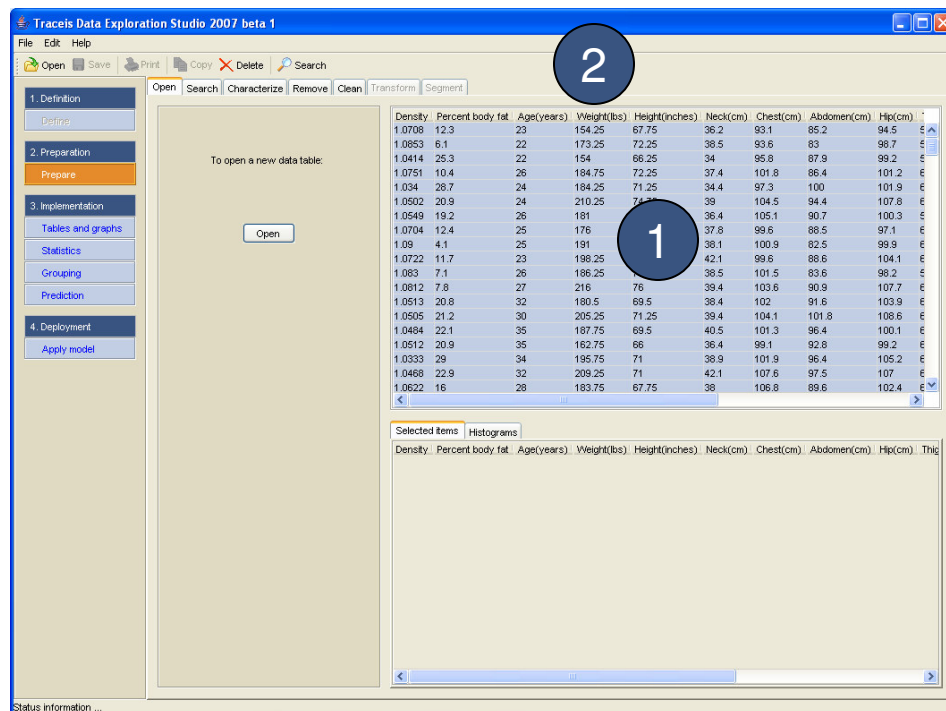
MAKING SENSE OF DATA

1 Table loaded

The table will be loaded into the software and is now ready to analyze.

2 Sort

To sort the table on any column, click on the header. The table will then be sorted according to the selected column from low to high.



MAKING SENSE OF DATA

1

Table characteristics

When the table is loaded, each variable is automatically characterized.
To view how each variable is characterized, click on the characterize tab.

2

Variables

To view how each individual variable is characterized, click on the name of the variable.

The screenshot shows the 'Trace3 Data Exploration Studio 2' application. The 'Characterize' tab is selected in the top menu. The left sidebar has tabs for '1. Definition', '2. Preparation', '3. Implementation', and '4. Deployment'. The 'Characterize' tab is active, showing a list of variables and their characteristics. A table on the right displays the data for these variables. The 'Selected Items' section at the bottom shows the variable 'Density'.

Density	Percent body fat	Age(years)	Weight(lbs)	Height(inches)	Neck(cm)	Chest(cm)	Abdomen(cm)	Hip(cm)
1.0708	12.3	23	154.25	67.75	36.2	93.1	85.2	94.5
1.0853	6.1	22	173.25	72.25	38.5	93.6	83	98.7
1.0414	25.3	22	154	66.25	34	95.8	87.9	99.2
1.0751	10.4	26	184.75	72.25	37.4	101.8	86.4	101.2
1.034	26.7	24	184.25	71.25	34.4	97.3	100	101.9
1.0502	20.9	24	210.25	74.75	39	104.5	94.4	107.8
1.0549	19.2	26	181	69.75	36.4	105.1	80.7	100.3
1.0704	12.4	25	176	72.5	37.8	99.6	88.5	97.1
1.09	4.1	25	191	74	38.1	100.9	82.5	99.9
1.0722	11.7	23	188.25	73.5	42.1	99.6	88.6	104.1
1.083	7.1	26	186.25	74.5	38.5	101.5	83.6	98.2
1.0812	7.8	27	216	76	39.4	103.6	90.9	107.7
1.0513	20.8	32	180.5	69.5	38.4	102	91.6	103.9
1.0505	21.2	30	205.25	71.25	39.4	104.1	101.8	108.6
1.0484	22.1	35	187.75	69.5	40.5	101.3	96.4	100.1
1.0512	20.9	35	162.75	66	36.4	99.1	92.8	99.2
1.0333	29	34	195.75	71	38.9	101.9	96.4	105.2
1.0468	22.9	32	209.25	71	42.1	107.6	97.5	107
1.0622	16	28	183.75	67.75	38	106.8	89.6	102.4