

Traceis™ Data Exploration Studio Graph matrices

1 Select the tables and graphs step

In this example, the body fat dataset was used. First, click on the tables and graphs step.

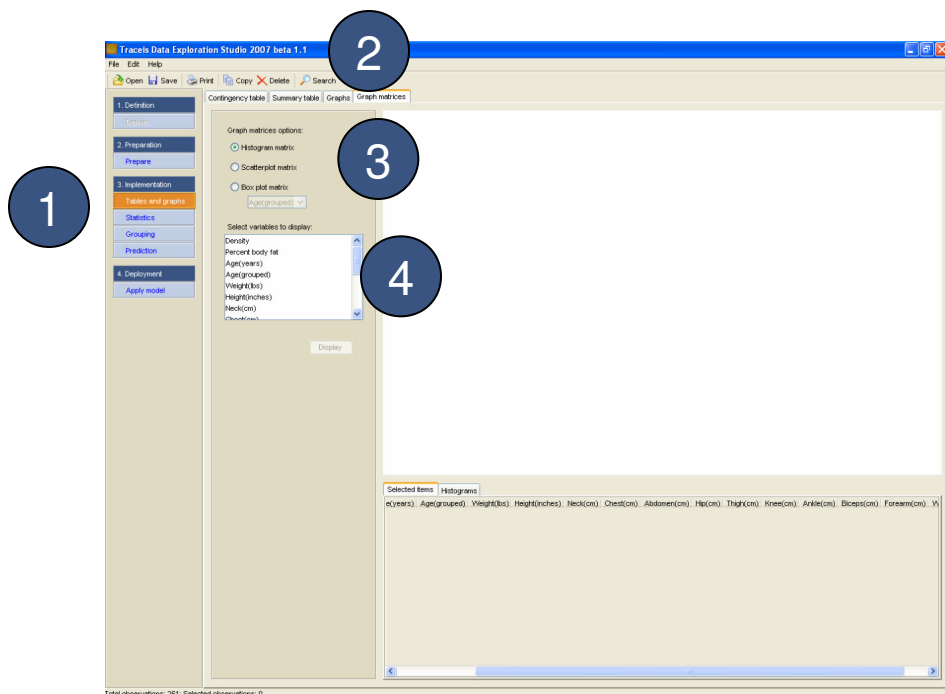
2 Select the graph matrices tab

3 Specify the type of graphs to display

There are three options: histogram matrix, scatterplot matrix and box plot matrix.

4 Specify the variables

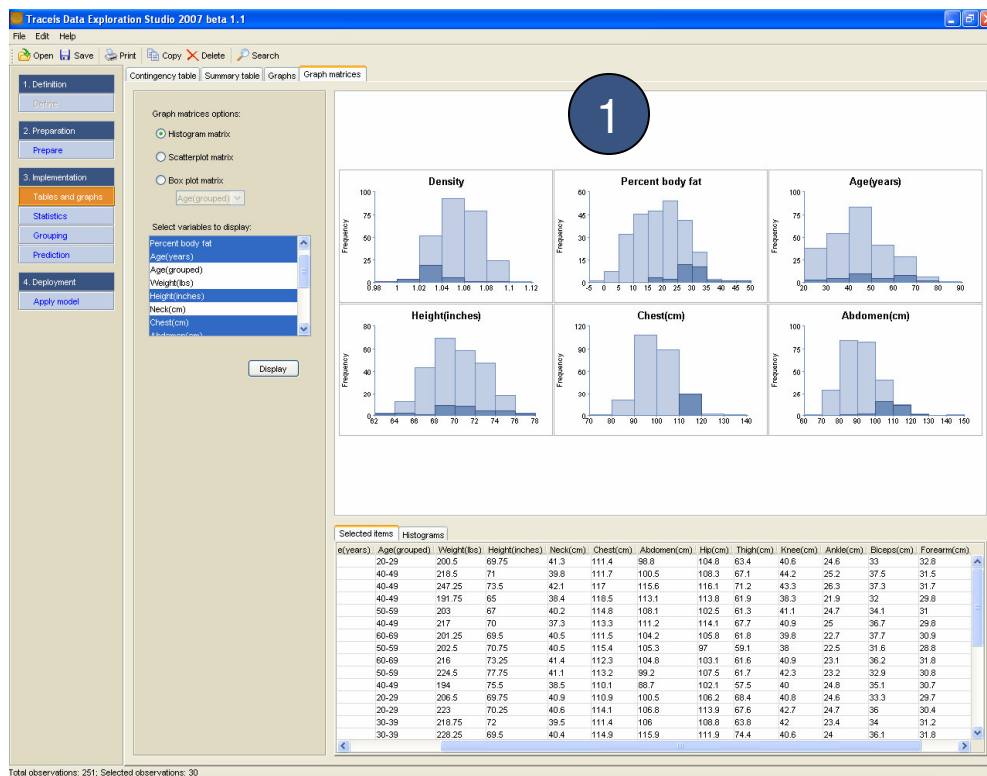
Specify the variables to display.



MAKING SENSE OF DATA

1 View histogram matrix

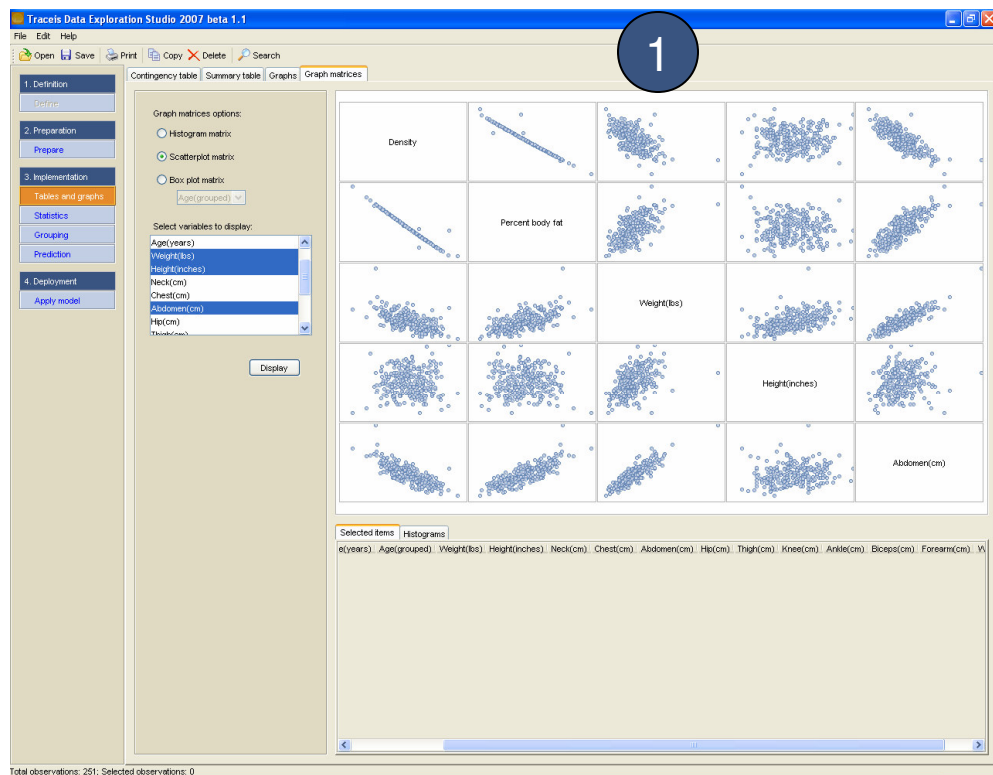
If the histogram matrix options was selected, a series of interactive histograms for each of the selected variables will be displayed, by clicking on the display button.



MAKING SENSE OF DATA

1 View scatterplot matrix

If the scatterplot matrix option was selected, a series of interactive scatterplots will be displayed, by clicking on the display button. A scatterplot is generated for each combination of variables selected. For example, the first row of four scatterplots have Density on the y-axis and the other four selected variables (Percent body fat, Weight(lbs), Height(inches) and Abdomen(cm)) on the four x-axis.



MAKING SENSE OF DATA

1 View box plot matrix

If the box plot matrix options was selected, a series of box plots for each of the selected variables will be displayed, by clicking on the display button.

